

**Anti-Fetuin A Antibody**  
**Catalog # ABO10743****Specification**

---

**Anti-Fetuin A Antibody - Product Information**

Application	<b>WB</b>
Primary Accession	<a href="#">P02765</a>
Host	<b>Rabbit</b>
Reactivity	<b>Human</b>
Clonality	<b>Polyclonal</b>
Format	<b>Lyophilized</b>

**Description**

Rabbit IgG polyclonal antibody for Alpha-2-HS-glycoprotein(AHSG) detection. Tested with WB in Human.

**Reconstitution**

Add 0.2ml of distilled water will yield a concentration of 500ug/ml.

**Anti-Fetuin A Antibody - Additional Information**

**Gene ID** 197

**Other Names**

Alpha-2-HS-glycoprotein, Alpha-2-Z-globulin, Ba-alpha-2-glycoprotein, Fetuin-A, Alpha-2-HS-glycoprotein chain A, Alpha-2-HS-glycoprotein chain B, AHSG, FETUA

**Calculated MW**

39325 MW KDa

**Application Details**

Western blot, 0.1-0.5 µg/ml, Human<br>

**Subcellular Localization**

Secreted.

**Tissue Specificity**

Synthesized in liver and selectively concentrated in bone matrix. Secreted in plasma. It is also found in dentin in much higher quantities than other plasma proteins.

**Protein Name**

Alpha-2-HS-glycoprotein

**Contents**

Each vial contains 5mg BSA, 0.9mg NaCl, 0.2mg Na<sub>2</sub>HPO<sub>4</sub>, 0.05mg Thimerosal, 0.05mg NaN<sub>3</sub>.

**Immunogen**

A synthetic peptide corresponding to a sequence at the N-terminus of human Fetuin A (46-62aa DYINQNLPWGYKHTLNQ).

**Purification**

Immunogen affinity purified.

**Cross Reactivity**

No cross reactivity with other proteins

**Storage**

**At -20°C for one year. After reconstitution, at 4°C for one month. It can also be aliquotted and stored frozen at -20°C for a longer time. Avoid repeated freezing and thawing.**

**Sequence Similarities**

Belongs to the fetuin family.

**Anti-Fetuin A Antibody - Protein Information**

**Name** AHSG

**Synonyms** FETUA

**Function**

Promotes endocytosis, possesses opsonic properties and influences the mineral phase of bone. Shows affinity for calcium and barium ions.

**Cellular Location**

Secreted.

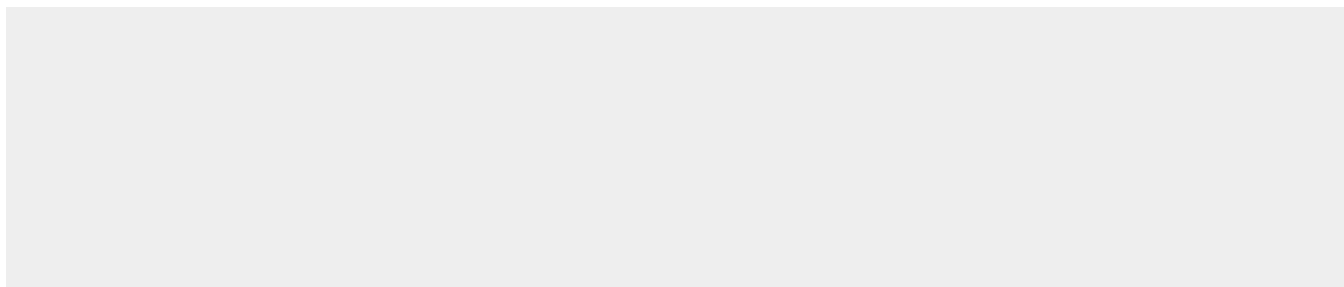
**Tissue Location**

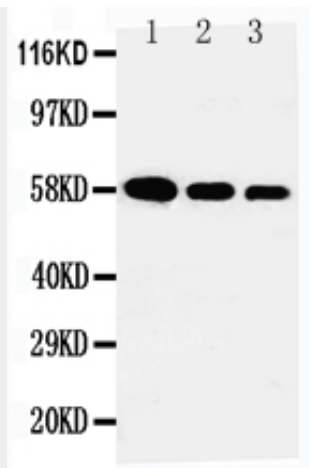
Synthesized in liver and selectively concentrated in bone matrix. Secreted in plasma. It is also found in dentin in much higher quantities than other plasma proteins

**Anti-Fetuin A Antibody - Protocols**

Provided below are standard protocols that you may find useful for product applications.

- [Western Blot](#)
- [Blocking Peptides](#)
- [Dot Blot](#)
- [Immunohistochemistry](#)
- [Immunofluorescence](#)
- [Immunoprecipitation](#)
- [Flow Cytometry](#)
- [Cell Culture](#)

**Anti-Fetuin A Antibody - Images**



Anti-Fetuin A antibody, ABO10743, Western blotting Lane 1: Recombinant Human Fetuin A Protein 10ng Lane 2: Recombinant Human Fetuin A Protein 5ng Lane 3: Recombinant Human Fetuin A Protein 2.5ng

#### **Anti-Fetuin A Antibody - Background**

Alpha-2-HS-glycoprotein(AHSG) also known as fetuin-A is a protein that in humans is encoded by the AHSG gene. Fetuin-A belongs to the fetuin class of plasma binding proteins and is more abundant in fetal than adult blood. Its gene is mapped to 3q27. The protein is commonly present in the cortical plate of the immature cerebral cortex and bone marrow hemopoietic matrix. It is involved in several functions, such as endocytosis, brain development and the formation of bone tissue.